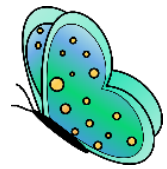




Butterfly and Bumblebee Class Newsletter September 2022



A note from The Reception Team

Welcome to the start of a very busy term, it has been really nice to welcome our children into Butterfly and Bumblebee class. The children are settling in well and are making friends, we have spent the first few days exploring the classroom and learning new routines.

Remember to login into Early Essence to see what your child has been learning about. Parents and children new to our school will receive their login in details shortly.

Literacy - the children are learning to write their names.

We have a new phonics programme called Little Wandle. We will be introducing the children to a new letter every day. They will learn the sound, words beginning with the letter and how to write it. We will be playing phonics games and practising how to blend 3 letter words.

How can you help - Practise writing your child's name. Use small letters. Draw and paint using chalk, pens, pencils and paint. Make sure your child is holding the pen/pencil properly.



Reading - The children will bring home a reading book and diary. We encourage children to read every day. All children that read 3 times in a week, receive a stamp on their reading card in school, which they can save up to buy a book from our Shaw Wood Book Shop.

12 stamps = free book for home.

Library Book -Friday is Library Day the children will choose a book for you to read to them at home. Children will swap it for a new one each Friday.



Our **PE** day is on **Monday**

Children will not need any special clothing until January

Our topic is Marvellous Me

The children will paint, draw and make clay models of themselves their families and pets. They will be encouraged to talk about and learn to appreciate how we are all different. We will be encouraging the children to learn about each other, and talk about feelings and friendships.

Maths - we will be matching numerals with amounts and practising the ability to recognise amounts without counting eg. on dominoes and dice. We will practise careful counting. The children will be developing language to talk about shapes and objects using words like straight, pointy, round, heavy, long and short.



Reception Baseline Assessment (RBA) -

Every child in Reception will now be required to participate in a statutory government assessment. It is a short, interactive and practical test of your child's early literacy, communication, language and mathematics skills, using materials that most children of your child's age will be familiar with. It is completed 1-1 with the teacher. You do not need to do anything to prepare your child they are unlikely to even know that they are doing an assessment. Your child's teacher will receive feedback of how your child performed in the assessment and will discuss it with you during parents' meetings. The information is used to provide schools with a baseline measure and track pupils progress from Reception to Year 6. Please talk to class teachers if you require any more information.

Save the date

29th September 9.00am - Little Wandle Phonics meeting , a parents guide

20th October -Stay and Play (pm)

More details nearer the time

Please ask if you have any questions or queries,

The Reception Team

